



CHASE doctoral studentships

A guide to applying for a studentship to start in October 2024

CHASE



Arts and
Humanities
Research Council

CHASE
Consortium for the Humanities and the Arts South-East England

**INFORMATION
&
REGISTRATION
DESK**

In this webinar, we'll cover:

- What is on offer in a CHASE studentship
- Different studentship opportunities
- How the application process works & what makes a good application

Rob Witts
CHASE DTP Manager
robert.witts@chase.ac.uk

1. What does a studentship include?



Needs based funding

Judith Johnson Playwright and Razed Roof Theatre Company



- Basic 3 years' funding, or up to 6 part-time
- When applying, language skills +6 or +12 months
- Additional skills or methodology +6 months
- Placement project +6 months



Funding includes

- Stipend (full time rate £18,622 non-London/ £20,622 London)
- Fees
- Access to support funding for training, placement and research costs

Eligibility

- Awards available to 'Home' and 'International' students
- EU citizens may be classed as 'Home' or 'International' depending on residency
- Status based on assessment by member institutions' admissions services

Victor Almeida
University of Essex
CHASE

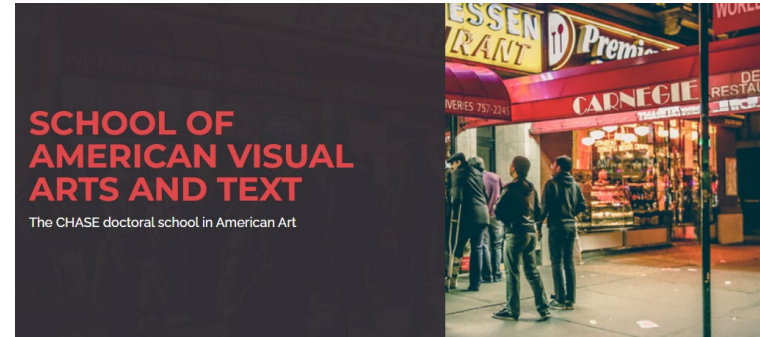
LEVINSTRASS&C



Support for your research

- Cohort training, including biannual Encounters conference
- Co-supervision opportunities
- Support for research including fieldwork and conferences
- Support for professional development
- Placements
- Student-led opportunities

Researcher-led networks



PAR

CHASE
Consortium for the Humanities and the Arts South-East England

Programme of events and support 2022/23

A home for Practice as Research

Partnership

CHASE FEMINIST NETWORK

CHASE Feminist Network

Creating spaces of resistance in what continues to be a patriarchal higher education sector, with ongoing and intersectional discrimination happening at all levels.

[CONTACT](#) [ABOUT US](#) [UPCOMING EVENTS](#) [CALL FOR SESSIONS](#) [SMALL PROJECTS FUND](#) [BLOG](#)

Digital Studies Collective CFS-Issue 1 Contact

PAST | ATTENTION An Instagram Timeline

PRESENT | DYSTOPIA Digital Oz

FUTURE | WEIRD DIGITAL Weaver Theory

PAST | AESTHETICS Computational Time and Deep Futures

FUTURE | ETERNITY You only live on

EDITORS' INTRO: ISSUE 1

PAST | PAPYROLOGY Killing Time

FUTURE | METAPHOR AI, Myth and Metaphor

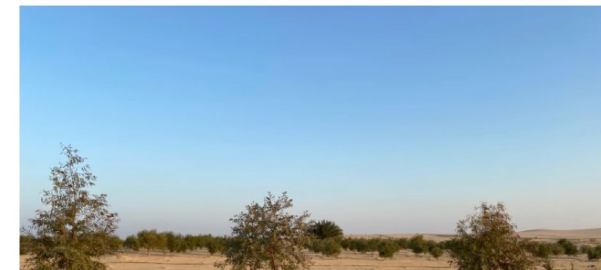
PRESENT | WAR Ukrainian Air Raid

PRESENT | FOLKLORE The Modern's Peripheries

PAST | COLLABORATION The Digital Archeologist

[CHASE Climate Justice](#) [Home](#) [Projects](#) [Small Grants](#) [Toolkit](#)

CHASE Climate Justice Network



Visit the CHASE Knowledge Exchange Hub for Placements and other collaboration opportunities

www.chasekeh.co.uk

Rebels in the Archives

Empirical Research

- Interviewed Activists, Academics and Feminist Archivists.
- Explored challenges and changes in archiving activism.
- Identified ways to develop partnerships and promote participation with collection materials.

Worked with the Collections

- Traced housing activism across the collections.
- Identified ways that archives can work together.
- Explored the differing narratives in newspapers, government policies, community pamphlets and oral history.



2. Different studentship opportunities





- Main competition route
- 50+ studentships
- Researcher-defined project



- Additional opportunities for candidates from Black, Asian and other minoritized ethnicities
- At least two additional studentships
- Inclusion in SHF network
- Application also included in main competition



- Defined projects with external partner organisations
- Five studentships
- Separate application route via institutions

Collaborative Doctoral Award projects available

Chinese Wallpaper at the Royal Pavilion, Brighton: A complex collage of cultures

Applications are invited for a studentship between the Department of Art History, University of Sussex and Brighton & Hove Museums (B&HM). This PhD will offer a unique opportunity to undertake an in-depth study into one of the UK's most significant Chinese export wallpaper collections and to make recommendations into the future development of this collection.

[Read More →](#)



Catalysts for Change and Collaborations in New Writing for the Stage: Theatre Underground, University of Essex and Mercury Theatre 1979-96

This project explores the history of Theatre Underground (1979-96), University of Essex campus theatre, and the relationships it forged between 'town and gown'. New writing for the stage brought to life significant events in local history and new drama in translation brought world theatre to Essex. Research will focus on the Theatre Underground archive at the University of Essex.

[Read More →](#)



THE FOUR-PLUS-DIMENSIONAL MATERIALITIES OF THE CHOREOGRAPHIC

The Art Department at Goldsmiths and the Rose Choreographic School at Sadler's Wells East, invite applications from outstanding practitioners for a fully-funded doctoral studentship to engage the four-plus-dimensional materialities of the choreographic. The project is being developed between CHOREOGRAPHIC in the Art Research MPhil/ PhD programme at Goldsmiths and the Rose Choreographic School at Sadler's Wells East.

[Read More →](#)



Displacement Documented: Refugee Oral Histories and the Making of Community Public History

Working with Prof Becky Taylor, a leading historian of refugees to Britain; Dr Anna Maguire, Lecturer in Public History and historian of migration; and Paul Dudman, lead archivist at the Living Refugee Archive, the PhD will investigate key themes and concepts of funding, stakeholders, community and diaspora, to explore the creation and legacy of refugee oral histories.

[Read More →](#)



UK Hip Hop Theatre and Participation at the BAC Beatbox Academy

The BAC Beatbox Academy and the Institute for Creative and Cultural Entrepreneurship (ICCE) at Goldsmiths, University of London seek a candidate with interests in hip hop culture, applied/community theatre and urban inequalities to conduct doctoral research. Working on a project entitled UK Hip Hop Theatre and Participation at the BAC Beatbox Academy, the successful candidate will have the opportunity to conduct ethnographic research into the Academy and wider UK hip hop theatre culture.

[Read More →](#)



3. How to apply



University of Essex



THE
COURTAULD
Institute of Art



CHASE



Arts and
Humanities
Research Council

Application process

1. Identify supervisory team
2. Apply to institution by local deadline
3. Develop your proposal
4. Submit your funding application by 26 January 2024
5. Institutions manage first stage of selection – you will need to complete the CHASE application form
6. Shortlisted applications go to CHASE subject panels
7. Panels score applications, and meet to discuss
8. Final decisions made by CHASE Management Board

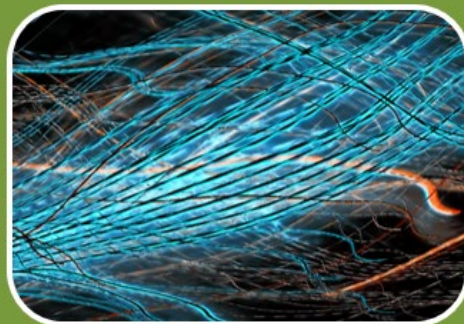
CHASE selection panels



History, thought and systems of belief



Art history and visual cultures



Media and creative practice



Literature, language and culture

Assessment criteria

Criterion	Assessed using
Research proposal (50%)	Research proposal task
Preparedness for research (25%)	Preparedness for research task 2 x References
Suitability of research environment (25%)	Research proposal task Supervisor statement

Research Proposal

- Title
- Abstract
- Proposal:
 - Introduction
 - Research background and questions
 - Research methods
 - Schedule of work
- Support from institution
- Bibliography
- Contextual Review (optional)

Sample Proposals

CHASE

About

News

Training

Resources

Our Research

Funding

Connections



Knowledge Exchange Hub

Sample applications

Panel A

Temporality & Meaning: a phenomenological approach to Jungian psychology

Subject area: Philosophy

[Download proposal](#)

Reproductive Freedom and the Right to Abortion in Yorubaland

Subject area: Law

[Download proposal](#)

Disembodied Souls in Early Medieval England

Silk Road on the eve of the 20th

The Blessing of Dharma

<https://www.chase.ac.uk/sample-proposals>

Preparedness for Research

- Academic record
- Achievements from previous employment
- Widening participation information

Other tasks in the application

- Contact information
- Nominating your supervisor
- Nominating two referees
- EDI statement
- Stuart Hall Foundation studentship statement (optional)

Stuart Hall Foundation studentship statement

- Please provide a short statement (up to 200 words) describing how your project fits with the Stuart Hall Foundation's mission
- This statement may repeat relevant material from your Widening Participation statement
- Used by SHF to assess applications

STUART HALL FOUNDATION

The Stuart Hall Foundation was established in 2015 by Professor Stuart Hall's family, friends and colleagues. The Foundation is committed to public education, addressing urgent questions of race and inequality in culture and society through talks and events, and building a growing network of Stuart Hall Foundation scholars and artists in residence. We work collaboratively to forge creative partnerships in the spirit of Stuart Hall; thinking together and working towards a racially just and more equal future.

We strive to fulfil our commitments through two streams of activity:

- Providing scholarships and creative opportunities for students and artists from disenfranchised and underrepresented backgrounds; building connections among them and with our partner institutions
- Promoting critical thought and understanding through a public programme of events, workshops and conversations that foster an intergenerational creative exchange, enrich political debate, and create space for new ideas

Top tips!

- Discuss your project with your prospective supervisors as early as possible
- Ambition is welcome, but the project must be achievable
- Consider your skill set and plan to address any gaps
- Think carefully about fit with your chosen institution in terms of supervisory expertise, research environment and resources
- Co-supervision may be useful for your project

Rob Witts, CHASE DTP Manager
robert.witts@chase.ac.uk

CHASE



Arts and
Humanities
Research Council